

MODEL No. KR-75N3RFSH
 MAX INLET: 3000 PSI
 REGULATED OUTLET: 500-2000 PSI
 SPECIFIED FLOW: 75 GPM
 Cv Outlet: 9.40
 Cv Vent: 1.40
 SUPPLY PORT: 1" NPT
 REGULATED OUTLET: 1" NPT
 VENT PORT: 1/2" NPT
 OPERATOR: FAIL SAFE HYD (3/8" SAE)
 (MAX PRESSURE: 1500 PSI)

MATERIAL:

- BODY: STAINLESS STEEL
- FLANGES & OPERATORS: CARBON STEEL
- INTERNAL: STAINLESS STEEL
- O-RINGS: BUNA (NITRILE)
- BACKUPS: TEFLON

NOTE:
 1. TURN CLOCKWISE TO LOCK FOR HYDRAULIC OPERATION
 2. TURN COUNTER-CLOCKWISE TO UNLOCK FOR MANUAL OPERATION

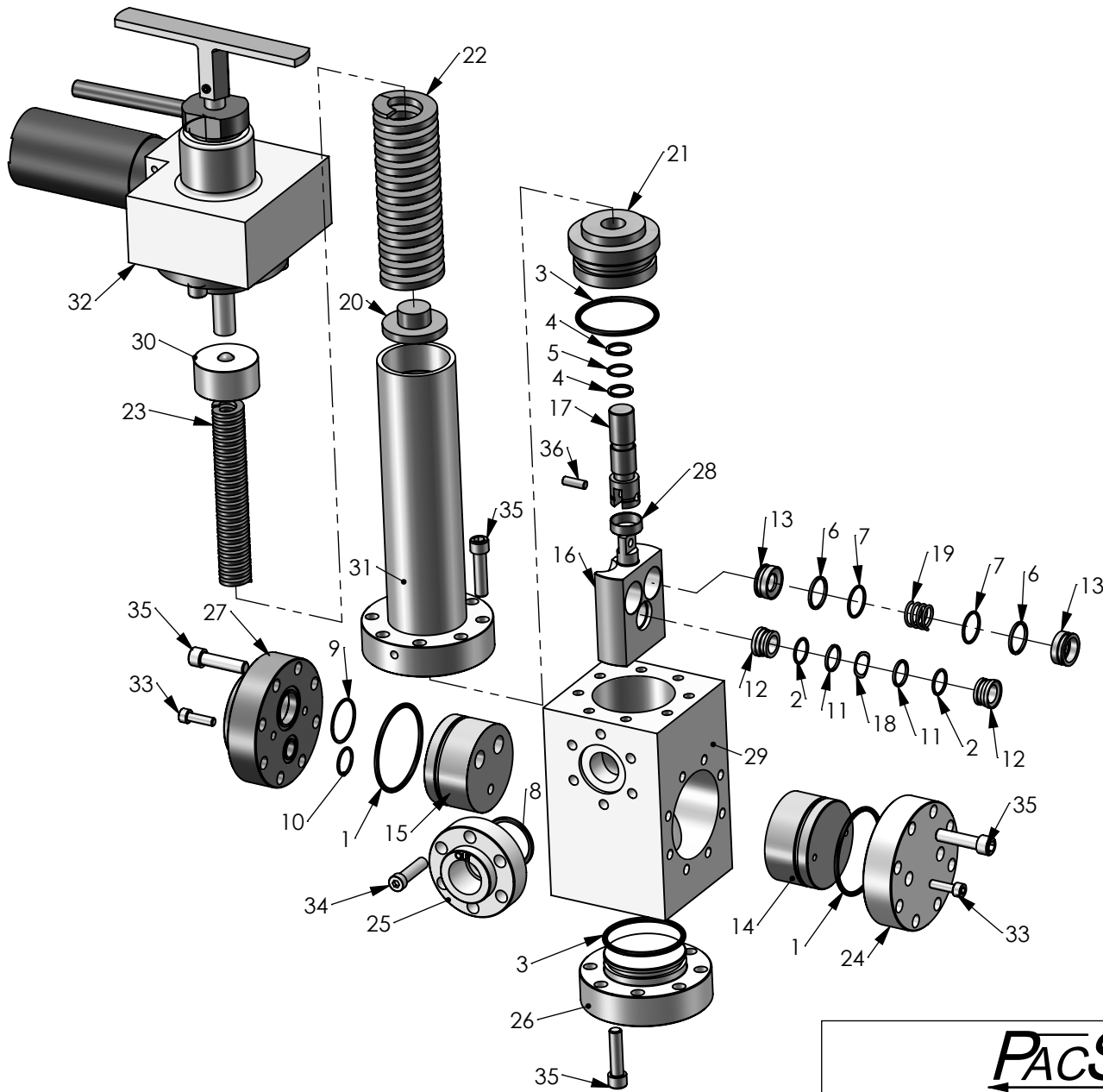
TEMPERATURE RATING: -30°F TO 180°F
 WEIGHT: 73 LBS

PROPRIETARY AND CONFIDENTIAL
 THE INFORMATION CONTAINED IN THIS DRAWING IS THE SOLE PROPERTY OF PacSeal Hydraulics.
 ANY REPRODUCTION IN PART OR AS A WHOLE WITHOUT THE WRITTEN PERMISSION OF PacSeal Hydraulics IS PROHIBITED.

TITLE Regulator, KR-75 FSH		SIZE A	DWG. NO. 40-1697	REV 2
SCALE: 1:5		SHEET 1 OF 2		

PacSeal Hydraulics Inc.

VALVES, ACCUMULATORS, CONTROLS



ITEM NO.	PART NUMBER	DESCRIPTION	QTY.
1	23-1263	O-Ring	2
2	23-1293	O-Ring	2
3	23-1319	O-Ring	2
4	23-1320	Backup Ring	2
5	23-1321	O-Ring	1
6	23-1322	Backup Ring	4
7	23-1323	O-Ring	4
8	23-1324	O-Ring	1
9	23-1325	O-Ring	1
10	23-1326	O-Ring	1
11	23-1329	Backup Ring	2
12	40-0013	Seal Ring, Vent	2
13	40-0014	Seal Ring, Supply	4
14	40-0015	Flow Plate, Blind	1
15	40-0016	Flow Plate	1
16	40-0106	Seal Container	1
17	40-0107	Piston	1
18	40-0109	Wave Spring	1
19	40-0110	Compression Spring	2
20	40-0134	Spring Plate	1
21	40-0186	Piston Guide	1
22	40-0189	Spring, Outer	1
23	40-0190	Spring, Inner	1
24	40-0195	Flange, Blind	1
25	40-0196	Flange, Outlet	1
26	40-0197	Flange, Lower	1
27	40-0198	Flange, Main	1
28	40-0199	Pin, Retainer	1
29	40-0200	Body	1
30	40-0300	Spring Guide	1
31	40-0383	Ajustment Head	1
32	40-1641	KR Failsafe Operator - Hydraulic	1
33	50-0066	Bolt, SHCS	4
34	50-0068	Bolt, SHCS	6
35	50-0069	Bolt, SHCS	32
36	50-0087	Dowel Pin	1

PACSEAL HYDRAULICS INC.

VALVES, ACCUMULATORS, CONTROLS

<p>PROPRIETARY AND CONFIDENTIAL</p> <p>THE INFORMATION CONTAINED IN THIS DRAWING IS THE SOLE PROPERTY OF PacSeal Hydraulics. ANY REPRODUCTION IN PART OR AS A WHOLE WITHOUT THE WRITTEN PERMISSION OF PacSeal Hydraulics IS PROHIBITED.</p>	TITLE	SIZE	DWG. NO.	REV
	Regulator, KR-75 FSH	A	40-1697	2
		SCALE: 1:5		SHEET 2 OF 2