

Model No.: KR-140N3RM
 MAX INLET: 3000 PSI
 REGULATED OUTLET: 500-2000 PSI
 SPECIFIED FLOW: 150 GPM
 Cv Outlet: 14.9
 Cv Vent: 2.80
 SUPPLY PORT (2): 1" NPT
 REGULATED OUTLET: 1-1/2" NPT
 VENT PORT (2): 1/2" NPT
 OPERATOR: MANUAL OPERATOR

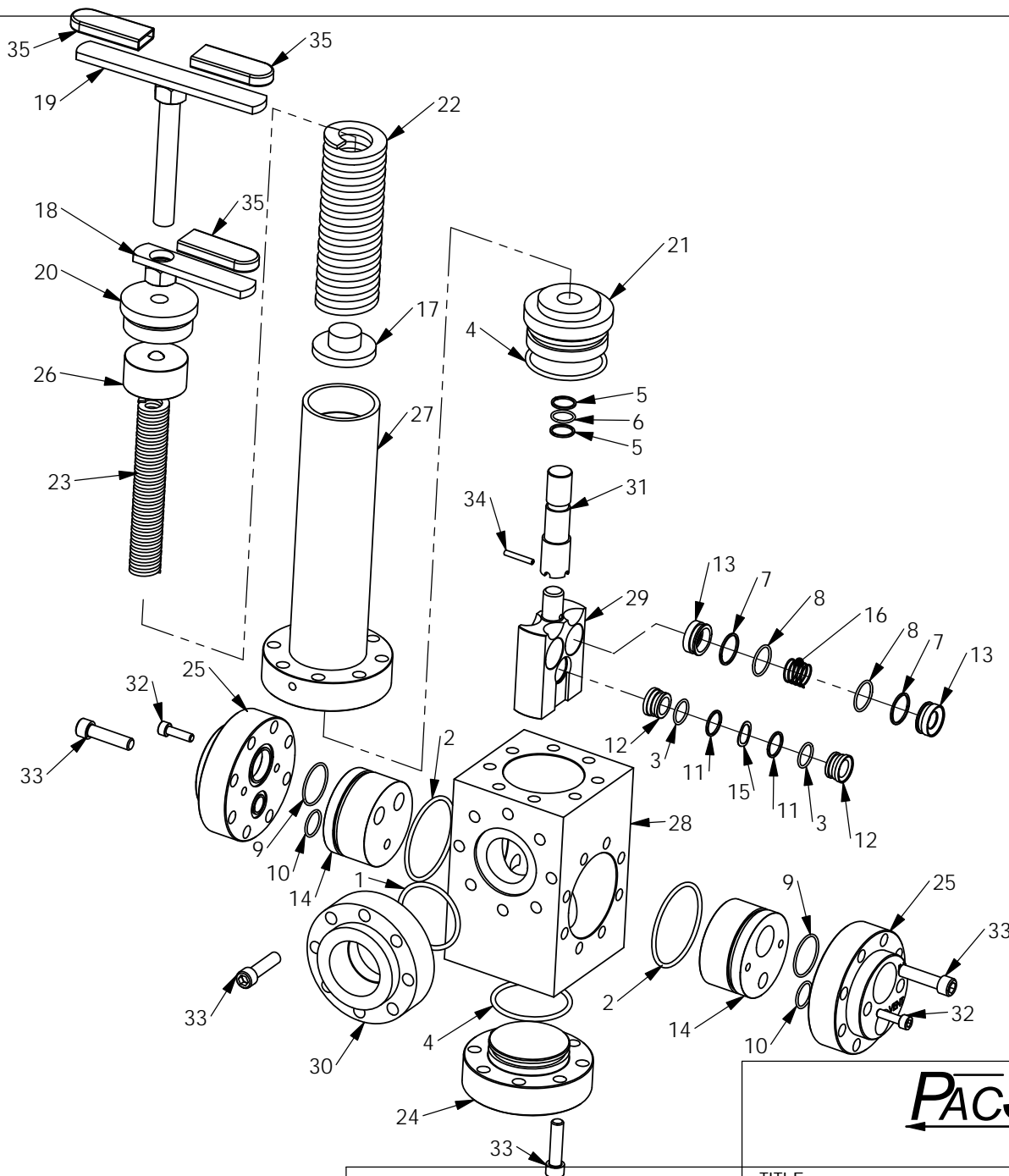
- MATERIAL:
- BODY: STAINLESS STEEL
 - FLANGES & OPERATORS: CARBON STEEL
 - INTERNAL: STAINLESS STEEL
 - O-RINGS: BUNA (NITRILE)
 - BACKUPS: TEFLON

TEMPERATURE RATING: -30°F TO 180°F
 WEIGHT: 48 LBS

PacSeal Hydraulics Inc.

VALVES, ACCUMULATORS, CONTROLS

| | | | | |
|--|--------------------|------------|--------------|-----|
| PROPRIETARY AND CONFIDENTIAL THE INFORMATION CONTAINED IN THIS DRAWING IS THE SOLE PROPERTY OF PacSeal Hydraulics. ANY REPRODUCTION IN PART OR AS A WHOLE WITHOUT THE WRITTEN PERMISSION OF PacSeal Hydraulics IS PROHIBITED. | TITLE | SIZE | DWG. NO. | REV |
| | Regulator, KR-140M | A | 40-1875 | 3 |
| | | SCALE: 1:4 | SHEET 1 OF 2 | |



| ITEM NO. | PART NUMBER | DESCRIPTION | QTY. |
|----------|-------------|---------------------------|------|
| 1 | 23-1126 | O-Ring | 1 |
| 2 | 23-1263 | O-Ring | 2 |
| 3 | 23-1293 | O-Ring | 2 |
| 4 | 23-1319 | O-Ring | 2 |
| 5 | 23-1320 | Backup Ring | 2 |
| 6 | 23-1321 | O-Ring | 1 |
| 7 | 23-1322 | Backup Ring | 4 |
| 8 | 23-1323 | O-Ring | 4 |
| 9 | 23-1325 | O-Ring | 2 |
| 10 | 23-1326 | O-Ring | 2 |
| 11 | 23-1329 | Backup Ring | 2 |
| 12 | 40-0013 | Seal Ring, Vent, KR-75 | 2 |
| 13 | 40-0014 | Seal Ring, Supply | 4 |
| 14 | 40-0016 | Flow Plate | 2 |
| 15 | 40-0109 | Wave Spring | 1 |
| 16 | 40-0110 | Spring | 2 |
| 17 | 40-0134 | Spring Plate | 1 |
| 18 | 40-0135 | Lock Handle | 1 |
| 19 | 40-0136 | Adjusting Screw & Handle | 1 |
| 20 | 40-0140 | Plug, Adjustment Head | 1 |
| 21 | 40-0186 | Piston Guide | 1 |
| 22 | 40-0189 | Spring, Outer | 1 |
| 23 | 40-0190 | Spring, Inner | 1 |
| 24 | 40-0197 | Flange, Lower | 1 |
| 25 | 40-0198 | Flange, Main | 2 |
| 26 | 40-0300 | Spring Guide | 1 |
| 27 | 40-0383 | Ajstment Head | 1 |
| 28 | 40-0950 | Body, KR-140 | 1 |
| 29 | 40-1292 | Seal Container | 1 |
| 30 | 40-1384 | Flange, Outlet | 1 |
| 31 | 40-2875 | Piston, 3/4" Dia - KR-140 | 1 |
| 32 | 50-0066 | Bolt, SHCS | 4 |
| 33 | 50-0069 | Bolt, SHCS | 40 |
| 34 | 50-0117 | Roll Pin | 1 |
| 35 | 50-0239 | Grip, Handle | 3 |

PACSEAL HYDRAULICS INC.

VALVES, ACCUMULATORS, CONTROLS

PROPRIETARY AND CONFIDENTIAL
 THE INFORMATION CONTAINED IN THIS DRAWING IS THE SOLE PROPERTY OF PacSeal Hydraulics. ANY REPRODUCTION IN PART OR AS A WHOLE WITHOUT THE WRITTEN PERMISSION OF PacSeal Hydraulics IS PROHIBITED.

| | | | |
|--------------------|----------|--------------|-----|
| TITLE | SIZE | DWG. NO. | REV |
| Regulator, KR-140M | A | 40-1875 | 3 |
| SCALE: 1:5 | | SHEET 2 OF 2 | |