

Model No.: KR-140N3RFSA  
 MAX INLET: 3000 PSI  
 REGULATED OUTLET: 500-2000 PSI  
 SPECIFIED FLOW: 150 GPM  
 Cv Outlet: 14.9  
 Cv Vent: 2.80  
 SUPPLY PORT (2): 1" NPT  
 REGULATED OUTLET: 1-1/2" NPT  
 VENT PORT (2): 1/2" NPT  
 OPERATOR: FAILSAFE AIR MOTOR

MATERIAL:  
 • BODY: STAINLESS STEEL  
 • FLANGES & OPERATORS: CARBON STEEL  
 • INTERNAL: STAINLESS STEEL  
 • O-RINGS: BUNA (NITRILE)  
 • BACKUPS:TEFLON

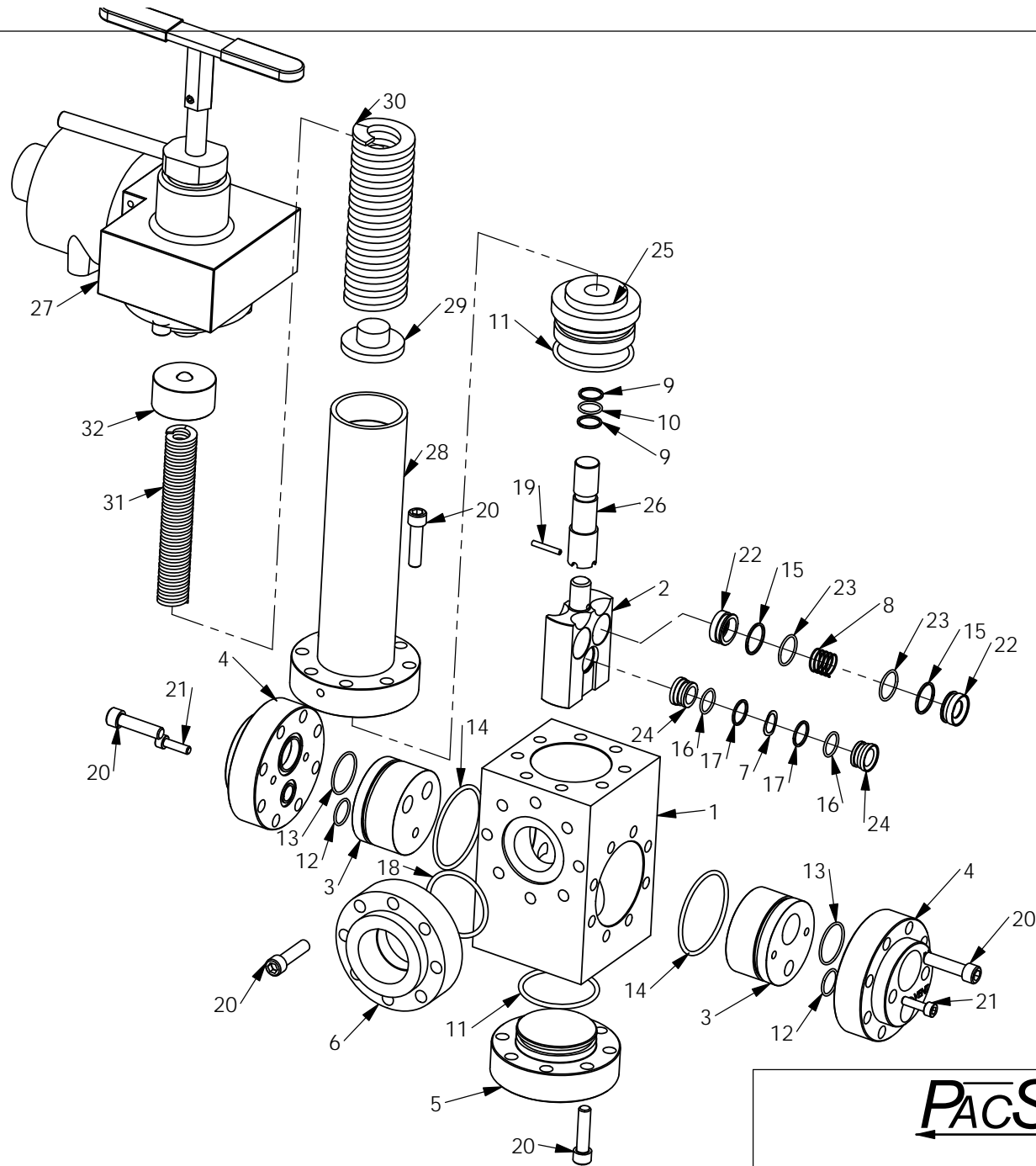
TEMPERATURE RATING: -30°F TO 180°F  
 WEIGHT: 75 LBS

NOTE:  
 1. TURN CLOCKWISE TO LOCK FOR FAILSAFE AIR OPERATION  
 2. TURN COUNTER-CLOCKWISE TO UNLOCK FOR MANUAL OPERATION

**PacSeal HYDRAULICS Inc.**

VALVES, ACCUMULATORS, CONTROLS

PROPRIETARY AND CONFIDENTIAL THE INFORMATION CONTAINED IN THIS DRAWING IS THE SOLE PROPERTY OF PacSeal Hydraulics. ANY REPRODUCTION IN PART OR AS A WHOLE WITHOUT THE WRITTEN PERMISSION OF PacSeal Hydraulics IS PROHIBITED.	TITLE	SIZE	DWG. NO.	REV
	Regulator, KR-140 FSA, L.P.	<b>A</b>	40-1890	4
	SCALE: 1:6			SHEET 1 OF 2



ITEM NO.	PART NUMBER	DESCRIPTION	QTY.
18	23-1126	O-Ring	1
14	23-1263	O-Ring	2
16	23-1293	O-Ring	2
11	23-1319	O-Ring	2
9	23-1320	Backup Ring	2
10	23-1321	O-Ring	1
15	23-1322	Backup Ring	4
23	23-1323	O-Ring	4
13	23-1325	O-Ring	2
12	23-1326	O-Ring	2
17	23-1329	Backup Ring	2
24	40-0013	Seal Ring, Vent, KR-75	2
22	40-0014	Seal Ring, Supply	4
3	40-0016	Flow Plate	2
7	40-0109	Wave Spring	1
8	40-0110	Spring	2
29	40-0134	Spring Plate	1
25	40-0186	Piston Guide	1
30	40-0189	Spring, Outer	1
31	40-0190	Spring, Inner	1
5	40-0197	Flange, Lower	1
4	40-0198	Flange, Main	2
32	40-0300	Spring Guide	1
28	40-0383	Adjustment Head	1
1	40-0950	Body, KR-140	1
2	40-1292	Seal Container	1
6	40-1384	Flange, Outlet	1
27	40-1564	Actuator, KR FSA L.P.	1
26	40-2875	Piston, 3/4" Dia - KR-140	1
21	50-0066	Bolt, SHCS	4
20	50-0069	Bolt, SHCS	40
19	50-0117	Roll Pin	1

# PacSeal Hydraulics Inc.

VALVES, ACCUMULATORS, CONTROLS

**PROPRIETARY AND CONFIDENTIAL**  
 THE INFORMATION CONTAINED IN THIS DRAWING IS THE SOLE PROPERTY OF PacSeal Hydraulics. ANY REPRODUCTION IN PART OR AS A WHOLE WITHOUT THE WRITTEN PERMISSION OF PacSeal Hydraulics IS PROHIBITED.

TITLE  
 Regulator, KR-140 FSA, L.P.

SIZE	DWG. NO.	REV
<b>A</b>	<b>40-1890</b>	<b>4</b>

SCALE: 1:5 SHEET 2 OF 2