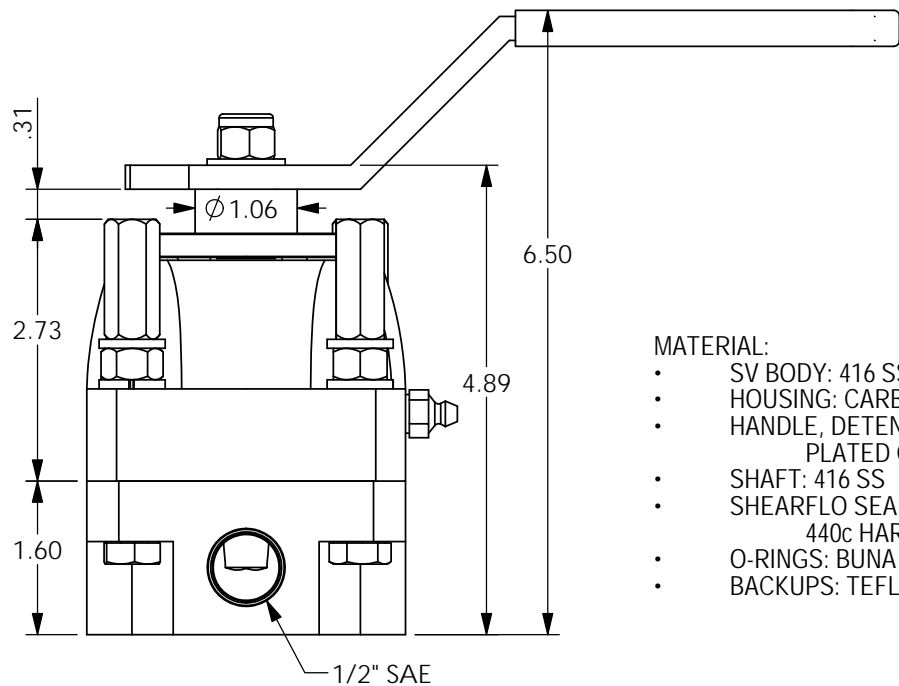
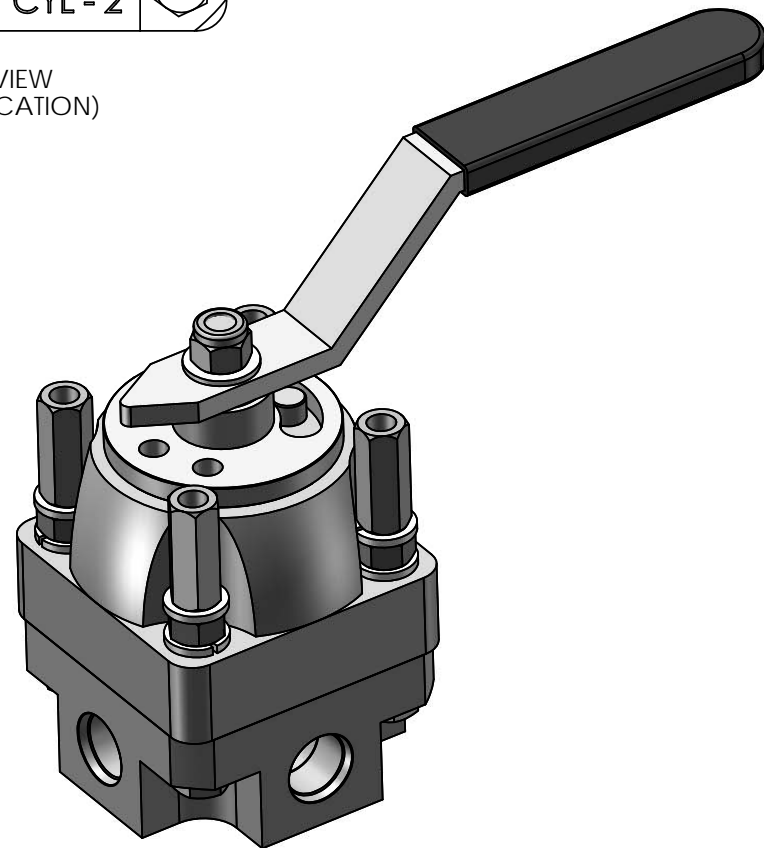


BOTTOM VIEW
(PORT LOCATION)



MATERIAL:

- SV BODY: 416 SS
- HOUSING: CARBON STEEL
- HANDLE, DETENT & SPACERS: PLATED CARBON STEEL
- SHAFT: 416 SS
- SHEARFLO SEALING COMPONENTS: 440c HARDENED
- O-RINGS: BUNA (NITRILE)
- BACKUPS: TEFLON



MODEL NO: SV 50-4S3IP01MN
 ROTOR: OPEN CENTER
 ALL PORTS: 1/2" SAE
 WORKING PRESSURE: 3000 PSI
 RETURN PORT: 250 PSI MAX
 Cv: 3.2
 FLOW: 30 GPM
 TEMP RATING: -30° TO 180°F

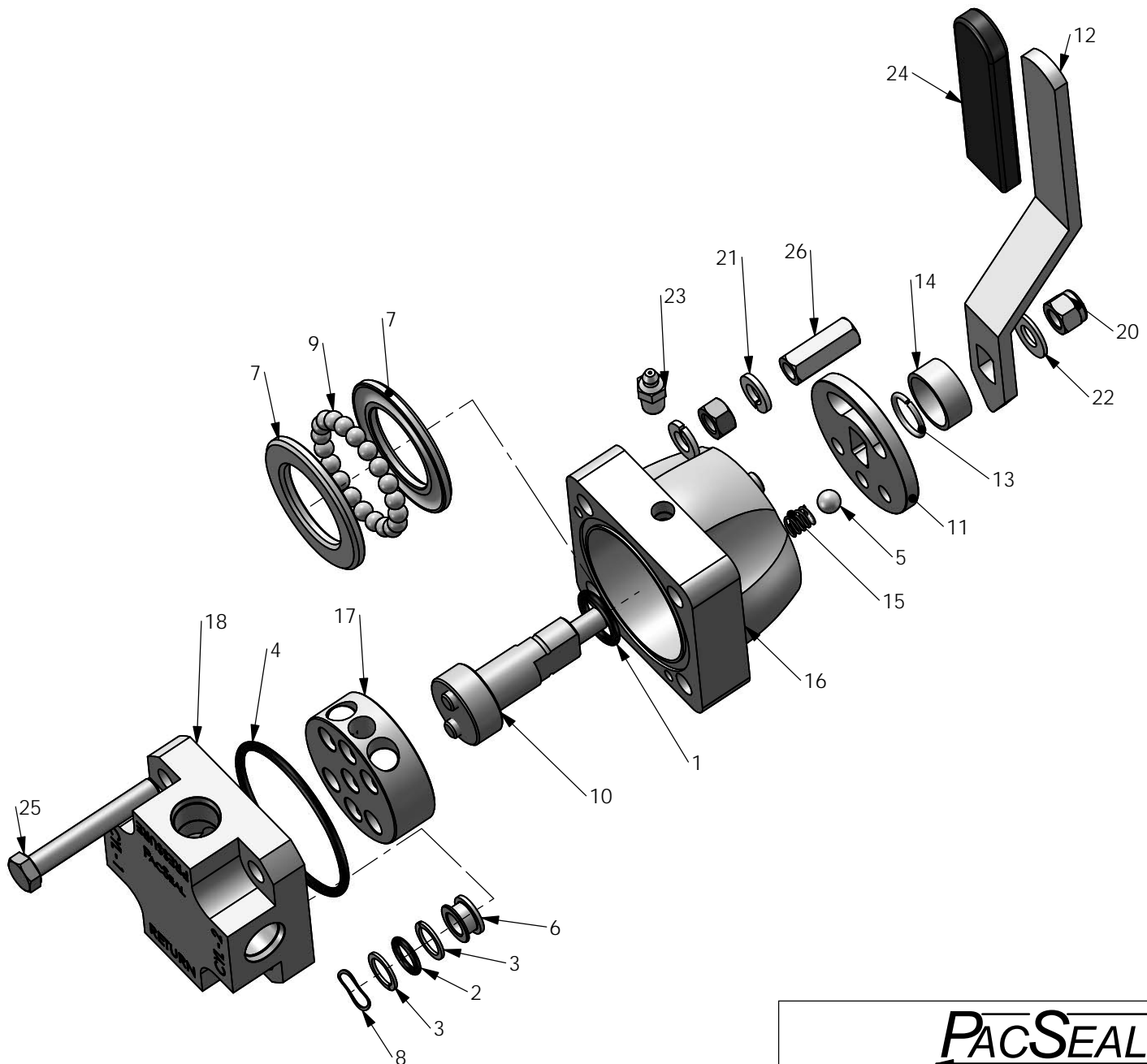
PacSeal Hydraulics Inc.

VALVES, ACCUMULATORS, CONTROLS

PROPRIETARY AND CONFIDENTIAL
 THE INFORMATION CONTAINED IN THIS DRAWING IS THE SOLE PROPERTY OF PacSeal Hydraulics. ANY REPRODUCTION IN PART OR AS A WHOLE WITHOUT THE WRITTEN PERMISSION OF PacSeal Hydraulics IS PROHIBITED.

TITLE
 SV-50 Open Center
 Inline Ported

| | | |
|------------|-------------------|--------------|
| SIZE | DWG. NO. | REV |
| A | 40-1923-PM | 2 |
| SCALE: 1:2 | WEIGHT: 9 | SHEET 1 OF 2 |



| ITEM NO. | PART NUMBER | DESCRIPTION | QTY. |
|----------|-------------|----------------------------------|------|
| 1 | 23-1125 | O-Ring | 1 |
| 2 | 23-1337 | O-Ring | 3 |
| 3 | 23-1414 | Backup Ring | 6 |
| 4 | 23-1415 | O-Ring | 1 |
| 5 | 40-0049 | Ball, Bearing | 1 |
| 6 | 40-0219 | Seal Ring, SV-50 | 3 |
| 7 | 40-0227 | Thrust Washer, SV-50 | 2 |
| 8 | 40-0237 | Wave Spring | 3 |
| 9 | 40-0259 | Ball, Bearing | 20 |
| 10 | 40-0275 | Shaft, SV-50 | 1 |
| 11 | 40-0277 | Disc, Detent SV-50 | 1 |
| 12 | 40-0280 | Handle, SV-50 | 1 |
| 13 | 40-0289 | Retaining Ring | 1 |
| 14 | 40-0292 | Spacer, Handle | 1 |
| 15 | 40-0296 | Spring | 1 |
| 16 | 40-0353 | Housing, SV-50 | 1 |
| 17 | 40-0387 | Rotor, SV-50 Open Center | 1 |
| 18 | 40-2237 | Body, SV-50 #8 SAE Inline Ported | 1 |
| 19 | 50-0078 | Hex Nut | 4 |
| 20 | 50-0092 | Locknut | 1 |
| 21 | 50-0103 | Lock Washer | 8 |
| 22 | 50-0107 | Washer, Shaft | 1 |
| 23 | 50-0176 | Grease Fitting | 1 |
| 24 | 50-0237 | Grip, Handle | 1 |
| 25 | 50-0267 | Bolt | 4 |
| 26 | 50-0461 | Nut, Panel Mount | 4 |

PACSEAL HYDRAULICS INC.

VALVES, ACCUMULATORS, CONTROLS

PROPRIETARY AND CONFIDENTIAL
 THE INFORMATION CONTAINED IN THIS DRAWING IS THE SOLE PROPERTY OF PacSeal Hydraulics. ANY REPRODUCTION IN PART OR AS A WHOLE WITHOUT THE WRITTEN PERMISSION OF PacSeal Hydraulics IS PROHIBITED.

TITLE
**SV-50 Open Center
 Inline Ported**

| | | |
|------------|-------------------|--------------|
| SIZE | DWG. NO. | REV |
| A | 40-1923-PM | 2 |
| SCALE: 2:5 | WEIGHT: 9 | SHEET 2 OF 2 |