

MODEL No. KR-75M 3RFSA

MAX INLET:	3000 PSI
REGULATED OUTLET:	500-2000 PSI
SPECIFIED FLOW:	75 GPM
Cv Outlet:	9.40
Cv Vent:	1.40
SUPPLY PORT:	1" NPT
REGULATED OUTLET:	1" NPT
VENT PORT:	1/2" NPT
OPERATOR:	FAILSAFE AIR OPERATOR

MATERIAL:

- BODY: STAINLESS STEEL
- FLANGES & OPERATORS: CARBON STEEL
- INTERNAL: STAINLESS STEEL
- O-RINGS: BUNA (NITRILE)
- BACKUPS:TEFLON

**NOTE:**

1. TURN CLOCKWISE TO LOCK FOR FAILSAFE AIR OPERATION
2. TURN COUNTER-CLOCKWISE TO UNLOCK FOR MANUAL OPERATION

TEMPERATURE RATING: -30°F TO 180°F  
EST. WEIGHT: 90 LBS

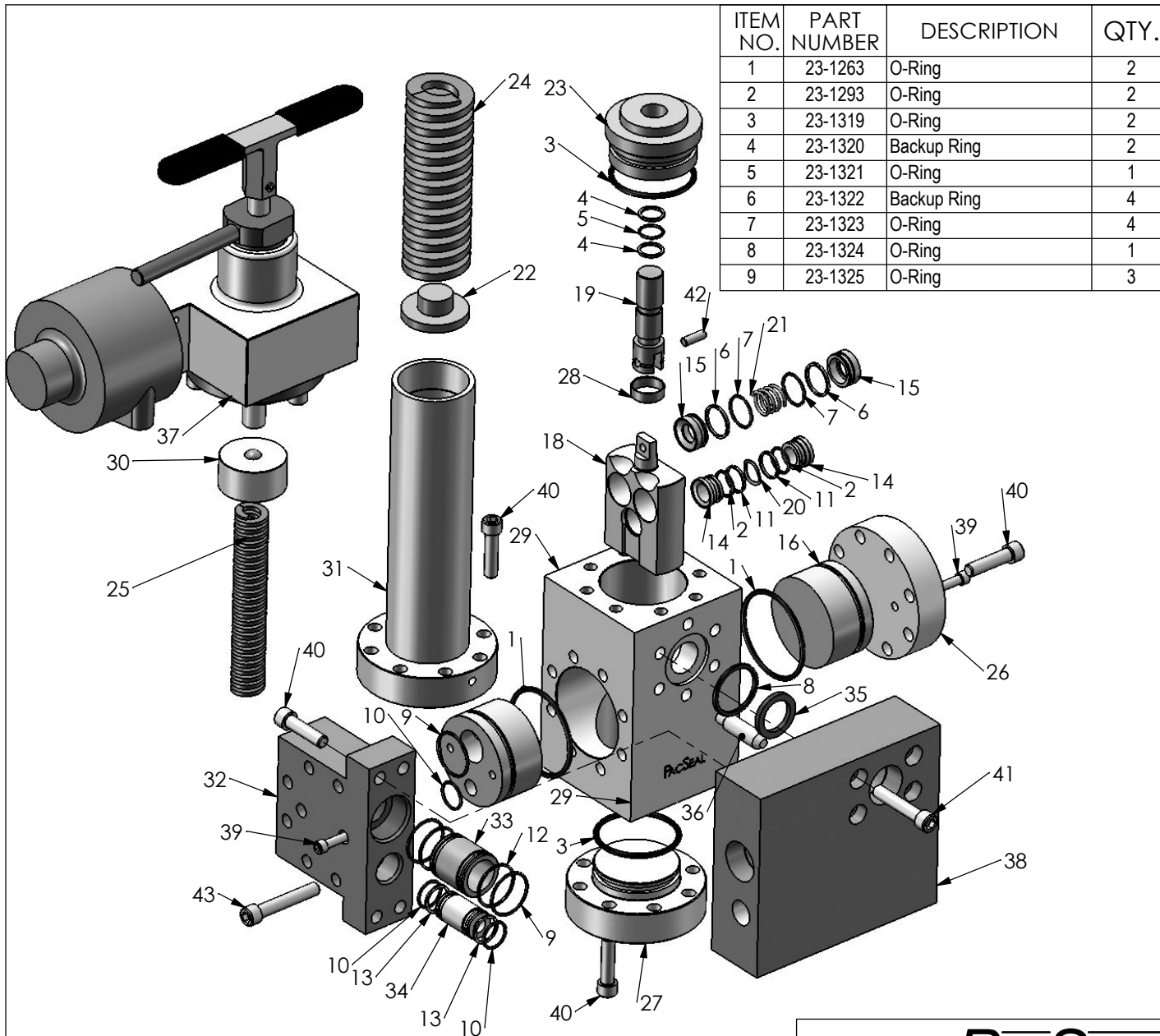
**PROPRIETARY AND CONFIDENTIAL**

THE INFORMATION CONTAINED IN THIS DRAWING IS THE SOLE PROPERTY OF PacSeal Hydraulics. ANY REPRODUCTION IN PART OR AS A WHOLE WITHOUT THE WRITTEN PERMISSION OF PacSeal Hydraulics IS PROHIBITED.

**PacSeal Hydraulics Inc.**

*VALVES, ACCUMULATORS, CONTROLS*

TITLE <b>Regulator, KR-75M FSA 1" NPT SPM</b>	SIZE <b>A</b>	DWG. NO. <b>40-2005</b>	REV <b>1</b>
SCALE: 1:5		EST.WEIGHT: 94	SHEET 1 OF 2



ITEM NO.	PART NUMBER	DESCRIPTION	QTY.
1	23-1263	O-Ring	2
2	23-1293	O-Ring	2
3	23-1319	O-Ring	2
4	23-1320	Backup Ring	2
5	23-1321	O-Ring	1
6	23-1322	Backup Ring	4
7	23-1323	O-Ring	4
8	23-1324	O-Ring	1
9	23-1325	O-Ring	3

ITEM NO.	PART NUMBER	DESCRIPTION	QTY.
10	23-1326	O-Ring	3
11	23-1329	Backup Ring	2
12	23-1433	Backup Ring	2
13	23-1509	Backup Ring	2
14	40-0013	Seal Ring, Vent, KR-75	2
15	40-0014	Seal Ring, Supply	4
16	40-0015	Flow Plate, Blind	1
17	40-0016	Flow Plate	1
18	40-0106	Seal Container	1
19	40-0107	Piston	1
20	40-0109	Wave Spring	1
21	40-0110	Compression Spring	2
22	40-0134	Spring Plate	1
23	40-0186	Plunger Guide, KR-75	1
24	40-0189	Spring, Outer	1
25	40-0190	Spring, Inner	1
26	40-0195	Flange, Blind	1
27	40-0197	Flange, Lower	1
28	40-0199	Pin, Retainer	1
29	40-0200	Body, KR-75	1
30	40-0300	Spring Guide	1
31	40-0383	Ajstment Head	1
32	40-1255	Left Flange, Sub Plate Mount	1
33	40-1256	Seal Sub	1
34	40-1257	Seal Sub	1
35	40-1279	Spacer Ring	1
36	40-1293	Locating Pin	1
37	40-1649	Actuator, KR FSA H.P.	1
38	40-2151	Subplate, KR-75	1
39	50-0066	SHCS	4
40	50-0069	Bolt, SHCS	28
41	50-0080	SHCS	4
42	50-0087	Dowel Pin	1
43	50-0338	SHCS	6

# PacSeal HYDRAULICS INC.

VALVES, ACCUMULATORS, CONTROLS

**PROPRIETARY AND CONFIDENTIAL**  
 THE INFORMATION CONTAINED IN THIS DRAWING IS THE SOLE PROPERTY OF PacSeal Hydraulics. ANY REPRODUCTION IN PART OR AS A WHOLE WITHOUT THE WRITTEN PERMISSION OF PacSeal Hydraulics IS PROHIBITED.

TITLE  
**Regulator, KR-75M FSA  
 1" NPT SPM**

SIZE <b>A</b>	DWG. NO. <b>40-2005</b>	REV <b>1</b>
SCALE: 2:9		SHEET 2 OF 2